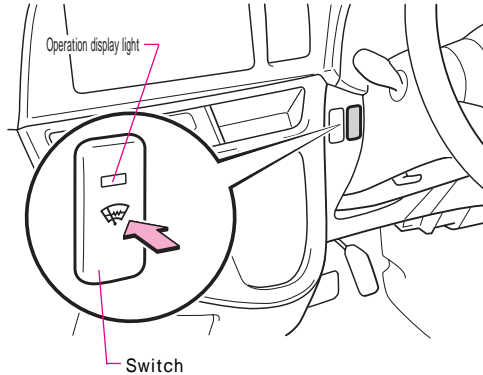


How to use of the reception desk window shield glass switch with heat ray.

Cold-weather model car -



Operate for about 15 minutes when you push the switch, and stop when pushing again while operating. - The operation display light lights while operating.



注意

It causes the battery rising when continuously using it for a long time.



Knowledge

About the reception desk window shield glass with heat ray

Heat the surface under the reception desk window glass and prevent the glass and the wiper blade being frozen.

About the operation condition

When the engine switch is turned on, it is possible to use it.

Contents



Warning

Basic
contents, operation

Driving
Handling
device

The
Handling/indoor
equipment

Good. Safety
of
To
theory/vehicle
and
equipment

How
to
attention

associate, aiming,
car

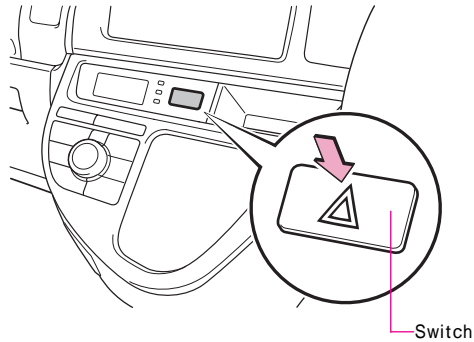
Maintenance

Myriad
One(D)

七
with

Index

How to use of the emergency blinking light switch.



Turn it off when all the direction instruction lights blink, and push again while blinking when the switch is pushed. -

The direction instruction display light in the meter blinks while blinking, too.



Do not use it for a long time when the engine has stopped to prevent the battery from going up.



Knowledge

About the emergency blinking light

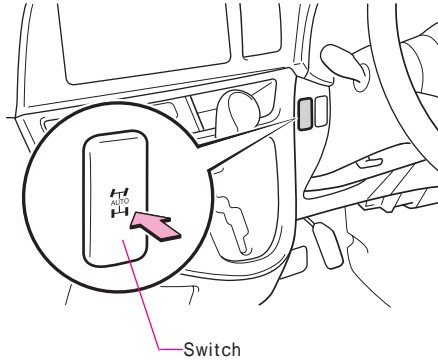
Use it to inform another car when the road is unavoidably parked due to the breakdown etc.

About the operation condition

It is possible to use it regardless of the position of the engine switch.

How to use of 4WD auto mode switch.

4WD car



4WD auto mode can be switched to the FF mode by pushing 4WD auto mode switch. -
4WD auto mode in meter operation display light lights when the switch is pushed.

Mode	State of switch	Display light
4WD auto mode		Lighting turning off after it
FF mode		blinks twice

Knowledge

About the mode

4WD auto mode

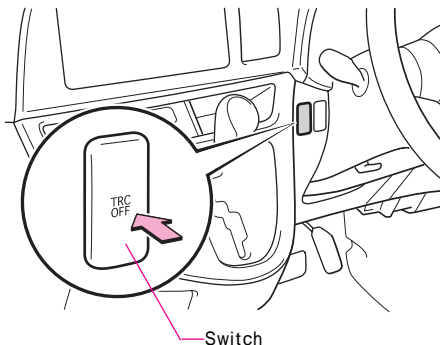
When cornering, climbing up the slope, and starting, driving power (torque) distribution to the rear wheel is automatically controlled from running according to various states of running such as roads slippery because of acceleration, the snow, and rain, etc. usually.

FF mode

FF is running. Improve the fuel cost performance by changing to the FF mode.

How to use of the TRC OFF switch.

VSC installation car



The operation of TRC stops when the switch is pushed, and it returns to the state that can be operated when pushing again while stopping. -

The TRC OFF display light in the meter lights while stopping.



Knowledge

About TRC

TRC is a device that tries to control the idling of the drive wheel caused when starting and accelerating in a slippery road, and to secure direction stability and driving power of the vehicle. (Read "TRC" of P.365 about operation.)

However, the output of the engine might not go up even if the gas pedal is depressed if TRC operates when escaping from mud and a new snow, etc. , and the escape be difficult.

The operation of TRC can be stopped by the TRC OFF switch at such time.

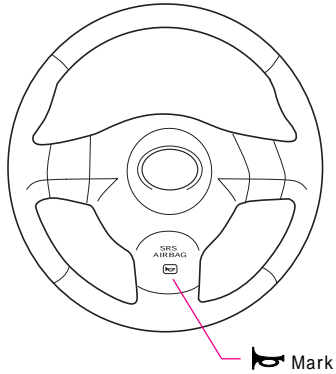
About the operation condition


It enters the state that TRC can operate usually (When you turn on the engine switch).

About an automatic return of TRC

It returns to the state that TRC can operate automatically when the engine switch is made ACC or LOCK after the operation of TRC is stopped with the TRC OFF switch.

How to use of the horn.



Steering wheel  The horn (horn) rings when the part around the mark is pushed.



Knowledge

About the operation condition

It is possible to use it regardless of the position of the engine switch.

Contents



Warning

Basic
controls, operationDriving
Handling
deviceThe
Handling/indoor
equipmentGood. Safety
of
To
theory/vehicle
and
equipmentHow
to
attention
associate driving

car

Maintenance

Myriad
One(D)

m/c

Index

MEMO
